



# Technical data sheet for Dewar flasks made of stainless steel type DSS and GSS

## Area of application

- ` laboratory technique
- ` medicinal technique
- ` biotechnology
- ` storing and company internal short-distance transport for CO<sub>2</sub> and LN<sub>2</sub>
- ` liquid or solid medias and solid matters

## Features of performance

- ` reliably and economically
- ` nominal capacity from 0,5 to 6 litres
- ` Dewar flasks with and without grip and handle



Dewar flasks type DSS



Dewar flasks type GSS

## Description of Dewar flasks

### Types and accessories

- ` DSS = Dewar flasks from type DSS 1000 with handle
- ` handle = stainless steel
- ` lid = polyurethane
  
- ` GSS = Dewar flasks with side grip
- ` GSS = Dewar flasks from type GSS 1000 with handle and side grip
- ` handle = stainless steel
- ` Side grip = plastic
- ` lid = polyurethane

### Description of Dewar flask

#### Material

- ` Stainless steel

#### Temperature range

- ` from -200°C to +150°C, for a short time +200°C
- ` lid to + 80°C

#### Pressures range

- ` Pressure / less

#### Vacuum

- ` High vacuum > 5 x 10<sup>-6</sup> mbar

### KGW - ISOTHERM

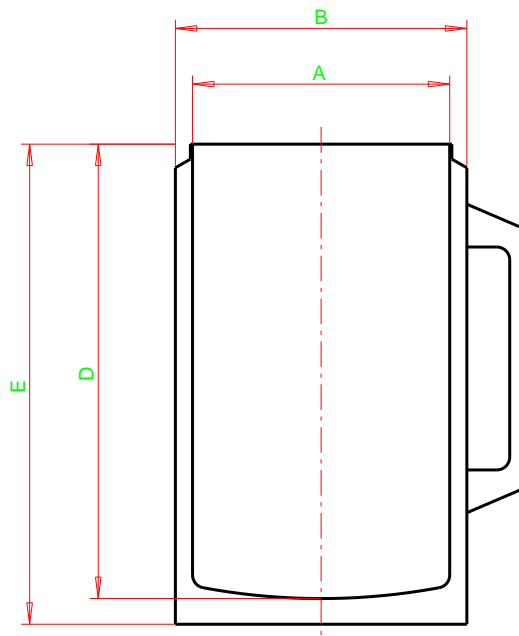
Karlsruher Glastechnisches Werk  
76185 Karlsruhe Gablonzerstraße 6  
Tel: 0721 95897-0 Fax: 0721 95897-77  
E-Mail: info@KGW-ISOTHERM.COM  
Internet: www.KGW-ISOTHERM.COM



# Technical data sheet for Dewar flasks made of stainless steel type DSS and GSS

## Safety advises and regulations

- always wear protective glasses and protective gloves
- national regulations for laboratories
- company- internal regulations
- safety regulations for handling with liquid gases
- ADR regulations



Dewar flasks type GSS

## Measurements data

Dewar flasks made of stainless steel, technical specifications								
Type	max. Content	A	B	D	E	Weight	Holding time LN2	Evaporation rate LN2
	ca. [ ml ]	mm	mm	mm	mm	ca. [ kg ]	ca. [ h ]	ca. [ L / d ]
DSS/GSS 500	500	65	80	180	200	0,6	12	1,0
DSS/GSS 1000	1000	85	100	206	225	0,9	21	0,9
DSS/GSS 1000 W	1000	100	114	156	178	0,7	15	1,6
DSS/GSS 2000	2000	100	114	285	305	1,3	42	1,1
DSS/GSS 3000	3000	184	200	160	190	1,5	22	3,1
DSS/GSS 6000	6000	184	200	270	300	2,2	49	2,9

Article numbers							
Type	Article No.		Type	Article No.		Plug for type	Article No.
GSS 500	2304		DSS 500	2100		DSS/GSS 500	2680
GSS 1000	2300		DSS 1000	2101		DSS/GSS 1000	2681
GSS 1000 W	2301		DSS 1000 W	2102		DSS/GSS 1000 W	2682
GSS 2000	2303		DSS 2000	2103		DSS/GSS 2000	2682
GSS 3000	2302		DSS 3000	2104		DSS/GSS 3000	2683
GSS 6000	2305		DSS 6000	2105		DSS/GSS 6000	2683